



2018

RENAISSANCE COOKING SYSTEMS



America's Best Value in
Outdoor Kitchen Equipment



Cutlass Pro Series

The RCS Cutlass Pro Series grills are designed for the weekend cook, as well as the professional chef. With cast stainless steel burners, solid stainless steel cooking grids and warming rack, plus the 304 stainless steel housing, these grills will provide many years of quality grilling.

Other features include the rear infrared rotisserie burner with motor, spit rod with forks, heat zone separators, interior halogen lights, LED illuminated control knobs and a full width slide-out drip tray. Also included is the sure-strike ignition system, which is the most reliable igniter in the industry. These grills are gorgeously sophisticated, yet very simple to operate.

All grills are backed by a lifetime warranty on all components!
That means performance with peace of mind!



Cutlass Pro Grill Cart

- 304 Stainless Steel Body
- Two Fold Down Side Shelves
- Double Access Doors
- Heavy-Duty Swivel Casters



* Shown RON30A & RONMC

Features

- 304 stainless steel housing
- Cast stainless steel burners
- Solid stainless steel cooking grids & warming rack
- Heat zone separators & heat tents
- Sure-strike ignition
- Dual interior halogen lights

- LED illuminated control knobs
- 20" stainless/ceramic infrared rear burner
- Stainless rotis motor & heavy forks/rod
- Upgraded commercial control knobs
- Full width slide-out drip tray
- Fuel type is field convertible - NG/LP



30" Cutlass Pro Grill - [RON30A](#)
3 Burners - 57,500 Total BTU's
840 Total Sq. In. Cooking Area
 Cart: [RONMC](#) / Liner: [LJRON30](#)
 Cart Cover: [GC30C](#)
 Drop-In Cover: [GC30DI](#)



38" Cutlass Pro Grill - [RON38A](#)
4 Burners - 72,500 Total BTU's
1034 Total Sq. In. Cooking Area
 Cart: [RONKC](#) / Liner: [LJRON38](#)
 Cart Cover: [GC38C](#)
 Drop-In Cover: [GC38DI](#)

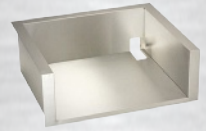


42" Cutlass Pro Grill - [RON42A](#)
4 Burners - 72,500 Total BTU's
1142 Total Sq. In. Cooking Area
 Cart: [RONJC](#) / Liner: [LJRON42](#)
 Cart Cover: [GC42C](#)
 Drop-In Cover: [GC42DI](#)

"Designed for the weekend cook as well as the professional chef."



Accessories for the Cutlass Pro Grills



Grill Liner



Cart Cover



Drop-In Cover



Infrared Searing Burner
IR30



Stainless Steel Griddle
RSSG2



Smoker Tray
RST3042



Check out the value-priced, Premier Series stainless steel BBQ grills. Be the envy of your friends and neighbors with a high quality RCS product at an economical price.

The Premier Series Grills feature stainless steel tube burners, exclusive briquette flavor grids, solid stainless steel cooking grids, sure strike ignition with backup manual flash tubes, cross-over tubes between burners, full width slide-out drip tray, stainless steel warming rack and oversized easy turn control knobs. All of these features are packed into a grill with a powerful cooking system and an immense cooking surface.



All grills are backed by a lifetime warranty on all components! That means performance with peace of mind!



Premier Grill Cart

- Stainless Steel Body
- Two Side Shelves
- Double Access Doors
- Heavy-Duty Swivel Casters

* Shown RJC32AL & RJCMC

Features

- Premium Stainless Steel Housing
- Solid stainless steel cooking grids & warming rack
- Sure-strike ignition with manual flash tubes
- NEW L models with dual interior halogen lights & led illuminated control knobs
- Stainless tubular burners
- Over sized easy turn control knobs
- Full width slide-out drip tray
- Briquette flavor grids
- Fuel type is field convertible - NG/LP



26" Premier Grill - [RJC26A](#)
3 Burners - 36,000 Total BTU's
546 Total Sq. In. Cooking Area
 Cart: [RJCSC](#) / Liner: [LJRJC26](#)
 Cart Cover: [GC26C](#)
 Drop-In Cover: [GC26DI](#)



32" Premier Grill - [RJC32A](#)
4 Burners - 60,000 Total BTU's
710 Total Sq. In. Cooking Area
 Cart: [RJCMC](#) / Liner: [LJRJC32](#)
 Cart Cover: [GC30C](#)
 Drop-In Cover: [GC30DI](#)



40" Premier Grill - [RJC40A](#)
5 Burners - 72,000 Total BTU's
906 Total Sq. In. Cooking Area
 Cart: [RJCLC](#) / Liner: [LJRJC40](#)
 Cart Cover: [GC42C](#)
 Drop-In Cover: [GC42DI](#)

"Be the envy of your friends and neighbors while enjoying one of these stainless steel grills."



[RJC32AL](#)
 Upgraded with Dual Interior Halogen Lights & LED Illuminated Control Knobs



[RJC40AL](#)
 Upgraded with Dual Interior Halogen Lights & LED Illuminated Control Knobs

Accessories for the Premier Grills



Grill Liner



Cart Cover



Drop-In Cover



Rotisserie Kit
[RJC32ROTIS](#) / [RJC40ROTIS](#)



Infrared Searing Burner
[IR2632](#)



Stainless Steel Griddle
[RSSG1](#)



Smoker Tray
[RST2632](#)



ProCom Series

Beautiful and sleek, the ProCom is the top of its class with durable features in a commercially resilient body. Featuring a total of 52,000 BTUs from two stainless steel burners, double-insulated hood, sure-strike ignition and heavy-duty anti-theft knobs. This grill excels in performance while communicating quality and style to residents or clients. The ProCom grill can be configured for any commercial application, whether cart or built-in.

All RCS grills are backed by a lifetime warranty on all components!
That means performance with peace of mind!



Accessories for the ProCom Grill



Grill Liner



Cart Cover



Drop-In Cover



Stainless Steel Griddle
RSSG2



28" Cutlass ProCom Grill - [RMC28](#)

2 Burners - 52,000 Total BTU's

541 Total Sq. In. Cooking Area

Cart: **RMCC** / Liner: **LJRM28**

Cart Cover: **GCRM28C**

Drop-In Cover: **GCRM28DI**

Cutlass ProCom Grill Cart

- Stainless Steel Body
- Two Side Shelves
- Locking Double Access Doors
- Heavy-Duty Swivel Casters



Features

- Premium Stainless steel housing
- Stainless steel u-tube burners
- Solid stainless steel cooking grids
- Sure-strike ignition with manual flash tubes
- Heavy duty anti-theft control knobs
- Heavy-duty flame tamers
- Full width slide-out drip tray
- Fuel type is field convertible - NG/LP



Turn up the heat with the powerful Cutlass Pro Burner. Dual burner rings for temperature control & 60,000 BTU's for intense heat.



Cutlass Pro Power Burner - **RSB3**

Liner: **LJRSB3**

Cover: **RDB1ELC**

Two 30,000 BTU burners with removable lid. 304 Stainless Steel. LED blue lights. Wok ring & power transformer included. RSSG1 fits.



Cutlass Pro Double Burner - **RDB1 / *RDB1EL**

Liner: **LJRDB1**

Cover: **RDB1ELC**

Two 12,000 BTU burners with removable lid. 304 Stainless Steel.

*LED blue lights when installed with Cutlass Pro Series Grills. RSSG2 fits.



NEW

Premier Double Burner - **RJCSSB / *RJCSSBL**

Liner: **LJRJCSSB**

Cover: **RDB1ELC**

Two 12,000 BTU burners with removable lid. 304 Stainless Steel.

*Transformer included. RSSG2 fits.

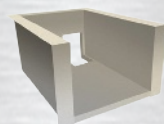


Cutlass Pro Single Burner- **RSB1**

Cover: **RSB1C**

One 12,000 BTU burner with removable lid. 304 Stainless Steel.

Accessories for Side Burners



Side Burner Liner



Slide-In Cover



Drop-In Cover



Stainless Steel Griddle
RSSG1



Stainless Steel Griddle
RSSG2



ACCESS DOORS & DRAWERS

Our sleek new line of Valiant series doors and drawers have everything you could want. Double wall lined, reversible, 304 stainless steel, non-protruding handles, doors open fully & soft close drawers.



Access Door - RAD66 / RAD88

Overall: 6"W x 6"H / 8"W x 8"H



Vertical Door - VDV1

Overall: 17"W x 22"H



Large Vertical Door - VDV2

Overall: 20"W x 27"H



Double Door - VDD1

Overall: 33"W x 22"H



Large Double Door - VDD2

Overall: 45"W x 22"H



Horizontal Door - VDH1

Overall: 27"W x 20"H



Trash Drawer - VTD1

Overall: 20"W x 16"D x 27"H

Includes one 13 gallon bin . *Not soft close



Double Trash Drawer - VTD2

Overall: 20"W x 27 1/4"D x 27"H

Includes two 13 gallon bins for trash & recycling. *Not soft close



Double Drawer/Door Combo - VDC1

Overall: 33"W x 20 1/2"D x 22"H

Fully enclosed drawer unit.



Triple Drawer - VTD3

Overall: 17"W x 20 1/2"D x 30 1/4"H



Double Drawer/Paper Towel Holder - VTHC1

Overall: 17"W x 20 1/2"D x 30 1/4"H



Double Drawer - VDR1

Overall: 17"W x 20 1/2"D x 22"H



Accessory & Tool Drawer - VDU1

Overall: 25 1/2"W x 20"D x 6"H

*Not fully enclosed



Warming Drawer - RWD1

Overall: 36"W x 21"D x 11 1/2"H

Fully enclosed, 120 volt, temperature ranges 50°F/10°C - 230°F/110°C.



Condiment Tray - ACT1

Overall: 11 7/8"W x 3 3/4"D x 4"H

Attaches to cabinet face or interior.



Outdoor Kitchen Vent - RVNT1

Overall: 13 7/8"W x 4 1/2"H

Recommended for every four feet of cabinet.



REFRIGERATION & ACCESSORIES

The stylish stainless steel and copper sinks design add a unique look to your outdoor kitchen.



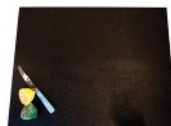
Stainless Sink - RSNK1

Double faucet, strainer, hot & cold water.



Stainless Undermount Sink - RSNK2

Single handle pull-down faucet, strainer, 360° swing angle, 18-gauge, hot & cold water.



Cutting Board - RCB1

Fits RSNK1 & RSNK3.



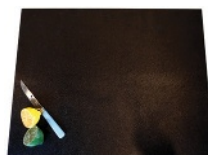
Copper Sink - RSNK3

Single handle bronze faucet, strainer, 16-gauge copper sink, hot & cold water.



Copper Undermount Sink - RSNK4

Single handle pull-down faucet, strainer, 360° swing angle, 16-gauge copper sink, hot & cold water.



Cutting Board - RCB2

Fits RSNK2 & RSNK4.



Drop-in Cooler - RIC1

Swing open lid, condiment tray, drain connection.



Trash Chute & Cutting Board - RTC1

Cutting board & chute with removable stainless lid included.



Condensate Pump - RPUMP

For use with REFR3 when gravity feed drain is not available.

Bring your outdoor kitchen to the next level with the RCS wine cooler, ice maker and refrigerators.



Refrigerator - [REFR1A](#)

Trim Kit: **RTR1A**

4.5 Cu. Ft., reversible hinge, stainless steel locking door, interior light, one drawer, automatic defrost, adjustable thermostat & wire shelves.



UL Rated Refrigerator - [REFR2](#)

Trim Kit: **RTR2**

5.6 Cu. Ft., reversible hinge, stainless steel construction, UL certified for outdoor use, led adjustable thermostat & locking door.



UL Rated Ice Maker - [REFR3](#)

Trim Kit: **RTR3**

Reversible hinge, stainless steel construction, UL certified for outdoor use, adjustable sized cubes, 26 lb storage capacity, 44 lbs per day production. Optional: RPump



Two Drawer Refrigerator - [REFR4](#)

Trim Kit: **RTR4**

5.3 Cu. Ft., two drawer, UL certified for outdoor use, stainless steel construction, interior lights, LED controls & locking door. *Not soft close



Wine Cooler - [JC88E](#)

Trim Kit: **JC88ETRIM**

3.1 Cu. Ft., glass front, interior led light, drawers, automatic defrost, adjustable thermostat & shelves.



Door Upgrade Kit - [SSFDLA](#), [SSFDLRA](#)

Stainless steel. SSFDLA (swing left), SSFDLRA (swing right) Fits: REFR1A



Trim Kit - See Fridge

304 stainless steel for a clean finished look.

The Grill Industries Most Comprehensive Warranty

RCS is proud to unveil the industries most comprehensive warranty program.

All RCS grill components, side burners, doors and drawers are now guaranteed for the **lifetime** of the original owner. All RCS refrigeration products are warranted for **five years** to the original owner.

This warranty excludes normal surface corrosion, discoloration, surface scratches and surface rust which may occur during use. RCS will not be responsible for any damage caused as a result of not following owner's manual instructions. This non-transferable warranty is limited to the replacement of original (one-time) defective parts does not include shipping and labor to remove or install replacement parts, if necessary. The owner must retain and submit their original receipt with any warranty claim to receive warranty parts. The warranty applies to the original owner only. Coverage is for residential use only, no commercial applications apply. No registration required.

This new RCS warranty is effective for product sales beginning January 1st, 2018.



(800) 51-GRILL • RCSTGasGrills.com • CustomerService@RCSTGasGrills.com

Category	Model	Product Description	Cut Out Dimensions (inches)			Category	Model	Product Description	Cut Out Dimensions (inches)		
			Width (A)	Depth (B)	Height (C)				Width (A)	Depth (B)	Height (C)
Grills	RJC26A	26" Premier	23 1/2	21 1/4	8 1/4	Doors & Drawers	RTC1	Trash Chute & Cutting Board	6 1/2	8 1/4	4
	RJC32A RJC32AL	32" Premier	30 5/8	20 3/4	8 1/4		RWD1	Warming Drawer	34 1/2	21	10 1/8
	RJC40A RJC40AL	40" Premier	37 3/4	21	8 1/4		VDC1	Double Drawer/Door Combo	30 1/2	22	19 1/2
	RMC28	28" ProCom	28 1/2	21	10 3/16		VDD1	Double Door - 33" Wide	30 1/2	-	19 1/2
	RON30A	30" Cutlass Pro	33	20	11		VDD2	Double Door - 45" Wide	42 1/2	-	19 1/2
	RON38A	38" Cutlass Pro	41 1/4	20	11		VDH1	Horizontal Door	24 1/2	-	17 1/2
	RON42A	42" Cutlass Pro	45	20	11		VDR1	Double Drawer - Fully Enclosed	15	22	19 1/2
Grill Liners	LRJC26	26" Premier	26	22 1/4	9 1/4		VDU1	Accessory & Tool Drawer	24	21	4
	LRJC32	32" Premier	33	22 1/4	9 1/4		VDV1	Vertical Door	14 1/2	-	19 1/2
	LRJC40	40" Premier	40 1/4	22	9 3/4		VDV2	Vertical Door - Large	17 1/2	-	24 1/2
	LRMC28	28" ProCom	30 1/8	24 3/8	11 1/2		VTD1	Trash Drawer	17 7/8	17 1/2	25
	LRON30	30" Cutlass Pro	35 1/2	21 1/4	11 3/4		VTD2	Double Trash Drawer	17 7/8	27 1/4	24 1/2
	LRON38	38" Cutlass Pro	43 5/8	21 1/4	12 1/4		VTD3	Triple Drawer - Fully Enclosed	15 1/2	22	27 3/4
	LRON42	42" Cutlass Pro	47 1/2	21 1/4	11 3/4		VTHC1	Paper Towel Holder/2 Drawer Combo	15 1/2	22	27 3/4
Side Burners	RDB1 RDB1EL	Cutlass/Cutlass Pro Double	12	19	8	Coolers, Fridges, Sinks & Trim Kits	ACT1	Condiment Tray (overall dimensions)	11 7/8	3 3/4	4
	RJC5SB RJC5SBL	Premier Double	10 3/4	21	8		JC88E	Wine Cooler	17 1/4	20	33
	RSB1	Cutlass Pro Single	8 1/4	15 1/2	-		JC88ETRIM	Trim Kit for JC88E Wine Cooler	17 7/8	-	33 1/4
	RSB3	Cutlass Pro	14	19	9 1/2		REFR1A	Refrigerator (was REFR1)	20 3/4	22	33
Side Burner Liners	LRDB1	RDB1/RDB1EL	14 1/2	20 1/4	9 1/8		REFR2	Refrigerator - UL Rated	24	27	32 3/4
	LRJC5SB	RJC5SB/L	12 7/8	22 1/8	9 5/8		REFR3	Ice Maker - UL Rated	15	24	33 1/2
	LR5B3	RSB3	16 3/8	20 1/2	10 3/8		REFR4	Drawer Refrigerator - UL Rated	24	22 1/2	34 1/4
							RIC1	Drop-in Cooler w/ Condiment Tray & Drain	27	19	17
							RSNK1	Stainless Sink & Faucet (was 107500)	14 3/8	14 3/8	-
							RSNK2	Stainless Undermount Sink & Faucet	21	15 3/4	-
							RSNK3	Copper Sink & Faucet	13	13	-
							RSNK4	Copper Undermount Sink & Faucet	22 1/4	17	-
							RTR1A	Trim Kit for REFR1A Refrigerator	21 1/4	-	33 1/4
							RTR2	Trim Kit for REFR2 Outdoor Refrigerator	24 1/4	-	33
							RTR3	Trim Kit for REFR3 Ice Maker	16 3/4	-	34 1/8
							RTR4	Trim Kit for REFR4 Drawer Refrigerator	25	-	34 7/8
							RVNT1	Island Vent	12 1/2	-	3 1/2

All cut-out dimensions are for reference only. Specifications are subject to change. Please refer to RCSTGasGrills.com for the most up to date measurements and specifications.

